

The Well-Tuned Keyboard(s) - Annotations

'The Well-Tuned Keyboard(s)' is a composition with ever-changing tunings. The deviations from the equal temperamant are up to 300 Cents.

Sounds of 'The Well-Tuned Keyboard(s)' are slightly distorted piano-samples.

A performance requires a laptop with SuperCollider ≥ 3.8 and a MIDI-Keyboard (keyboard with 2 octaves - z.B. AKAI LPK 25 - is sufficient).

An external computer-keyboard is recommended for the changes of the tuning.

For the positioning, it is necessary, that the thumb can reach the computer-keyboard and the other fingers the MIDI-Keyboard:



'The Well-Tuned Keyboard(s)' has to be played with a Screen-Score: After launching SuperCollider, the evaluation of the file '_WTK.scd' displays the first page of the score and the current tuning:

Bb

The Well-Tuned Keyboard(s)
für variabel stimbbares Keyboard

Johannes Quint, 2018

Stimmung: 1 - 17/16 - 9/8 - 19/16 - 5/4 - 21/16 - 11/8 - 3/2 - 13/8 - 27/16 - 7/4 - 15/16

♩ = ca. 56

11

20

29

ab hier: bei Akkorden immer schnelles Aufwärtsarpeggio

The tuning is as follows: 1 - 17/16 - 9/8 - 19/16 - 5/4 - 21/16 - 11/8 - 3/2 - 13/8 - 27/16 - 7/4 - 15/16

The root of the scale (the '1') is to be changed when a note name is notated in the score. The change happens shortly before the playing of the note. In the example, the new tuning (G) has to be executed shortly before the third 'd-f':

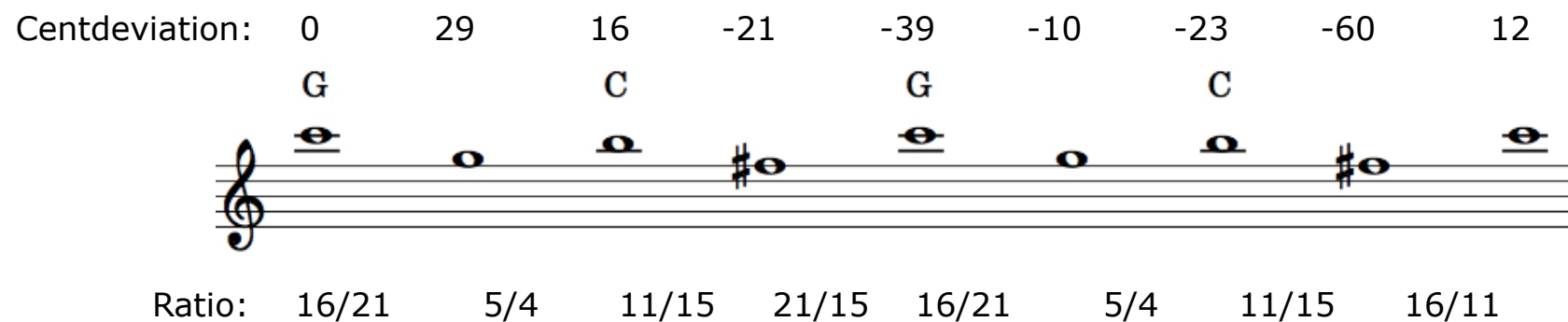
♩ = ca. 56

11

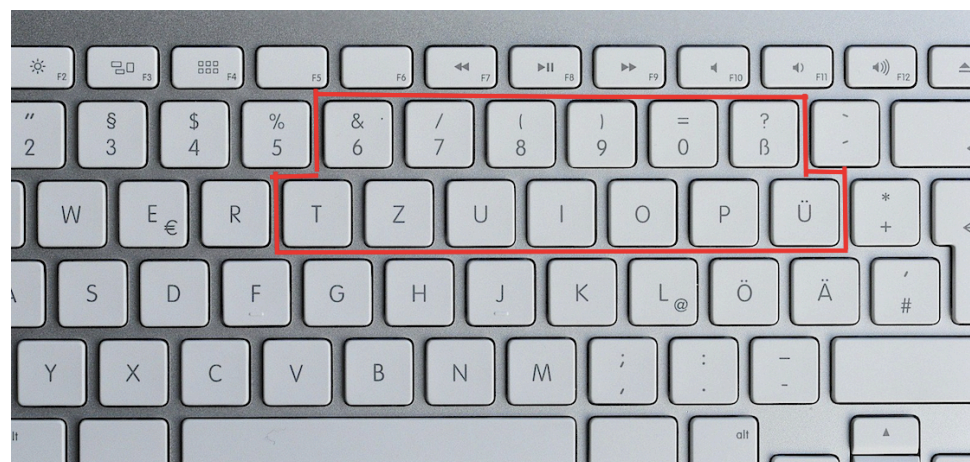
20

29

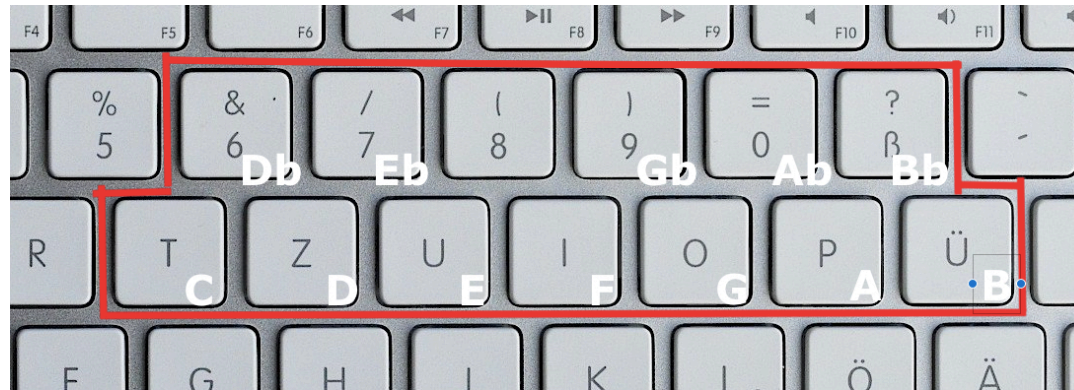
The new tuning sets the last-played note as a point of reference of the new scale, i.e.:



Keys for tuning-changes (american keyboard layout - the '8' isn't used):



Keys are chosen according to the arrangement of the piano-keys:



Additional keys:

R:	Re-establishment of the start-tuning
. (Dot):	Stops any sound
UpArrow/DownArrow:	Go to next score-page